



# Valvescan Type VSD Intelligent Valve Controller

– Valve Control & Diagnostic Centre Software

## INSTALLATION GUIDE MANUAL



Imtex Controls Limited  
United Kingdom  
Tel: +44(0)8700-340002 / [www.imtex-controls.com](http://www.imtex-controls.com)



## Table of contents

<b>1</b>	<b>General</b> .....	<b>3</b>
1.1	System requirements.....	3
1.2	Software.....	3
<b>2</b>	<b>Installation</b> .....	<b>4</b>
2.1	Valvescan Valve Control & Diagnostic Centre .....	4
2.2	PACTware.....	4
2.3	HART Com DTM .....	4
2.4	V C DTM .....	4
<b>3</b>	<b>PACTware configuration</b> .....	<b>5</b>
<b>4</b>	<b>Start VCDC from PACTware</b> .....	<b>8</b>
<b>5</b>	<b>Yokogawa PRM</b> .....	<b>9</b>



## 1 General

This document describes how to install Valvescan Valve Control & Diagnostic Centre (VCDC) Software

### 1.1 System requirements

Operating system: Windows XP (SP3), Windows 7  
Programs: Microsoft Word 2010, Microsoft .NET Framework 4

The user must be local administrator on the PC.

Minimum requirements for the hardware  
Screen resolution: 1024 pixels times 768 pixels  
Processor: Pentium 4 or equivalent  
RAM: 256 MB  
Disk space: 400 MB

### 1.2 Software

To install VCDC you need the following software.

- Valvescan VCDC (DDC-SW-001)

For HART compatibility

- V C DTM (DDC-SW-002)
- PACTware 4.1 from ICS  
([http://www.icsgmbh.com/english/PACTware\\_download.htm](http://www.icsgmbh.com/english/PACTware_download.htm))
- HART CommDTM for PACTware  
([http://www.icsgmbh.com/english/PACTware\\_download.htm](http://www.icsgmbh.com/english/PACTware_download.htm))



---

## **2 Installation**

### **2.1 Valvescan Valve Control & Diagnostic Centre**

- a) Run setup.exe and follow the instruction on the screen. Accept the default settings.  
VCDC is now installed and can be started from the "Program Menu".

For HART compatibility complete the following steps.

### **2.2 PACTware**

- a) Install PACTware

### **2.3 HART Com DTM**

- a) Install the DTM

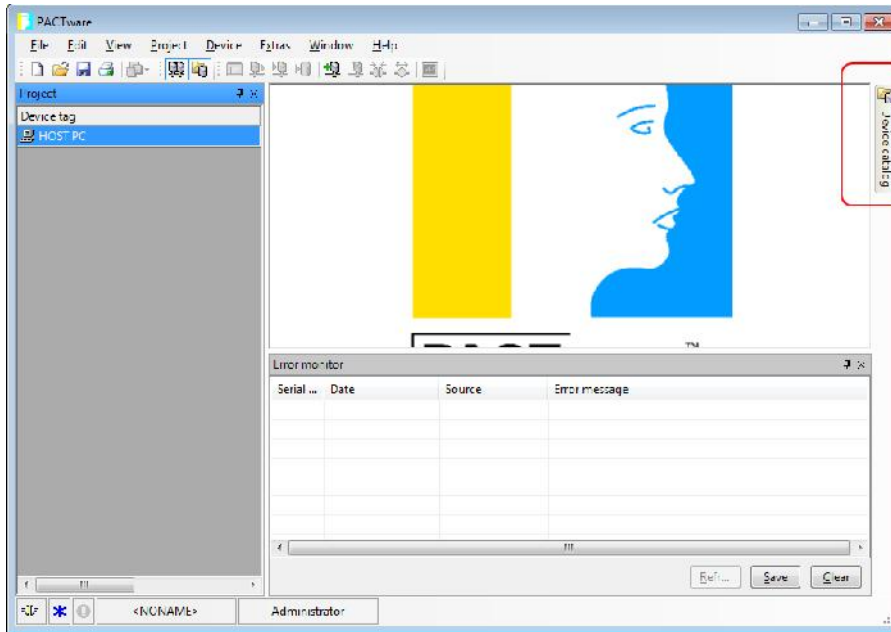
### **2.4 V C DTM**

- a) Run "V C DTM x.x.x.msi" and follow the instruction on the screen. Accept the default settings.

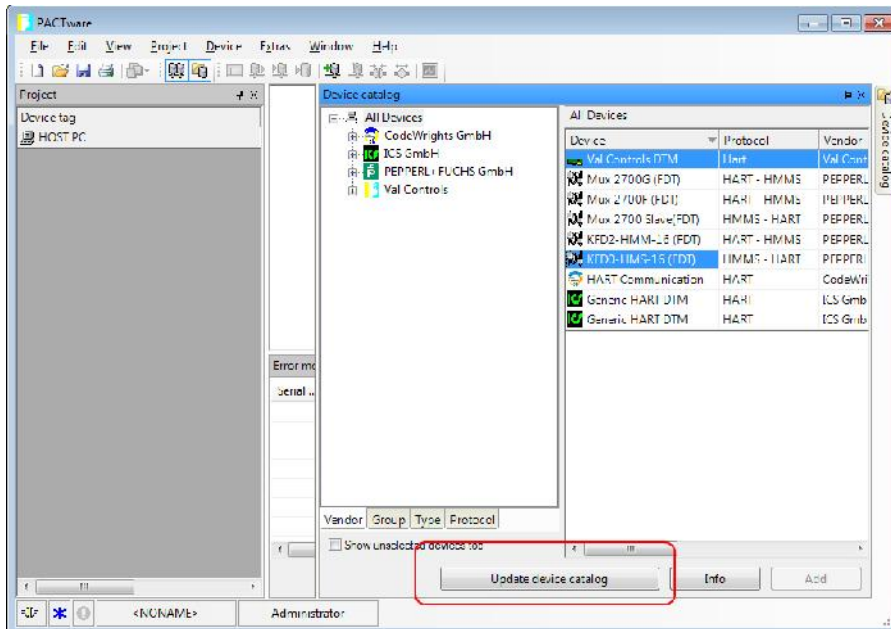
### 3 PACTware configuration

Start PACTware from the “Program menu”.

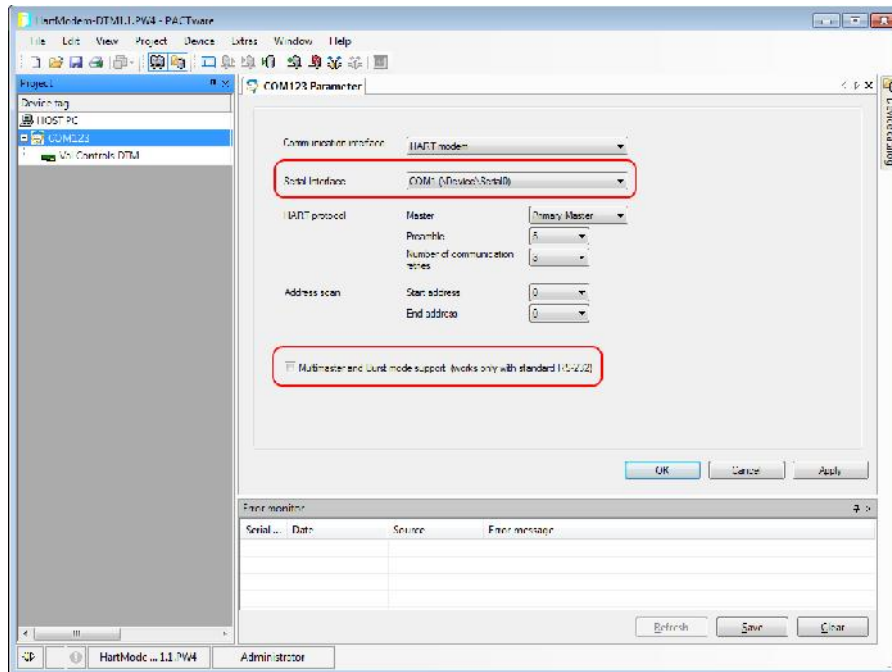
- 1) Open the “Device catalog” by pressing the button to the right.



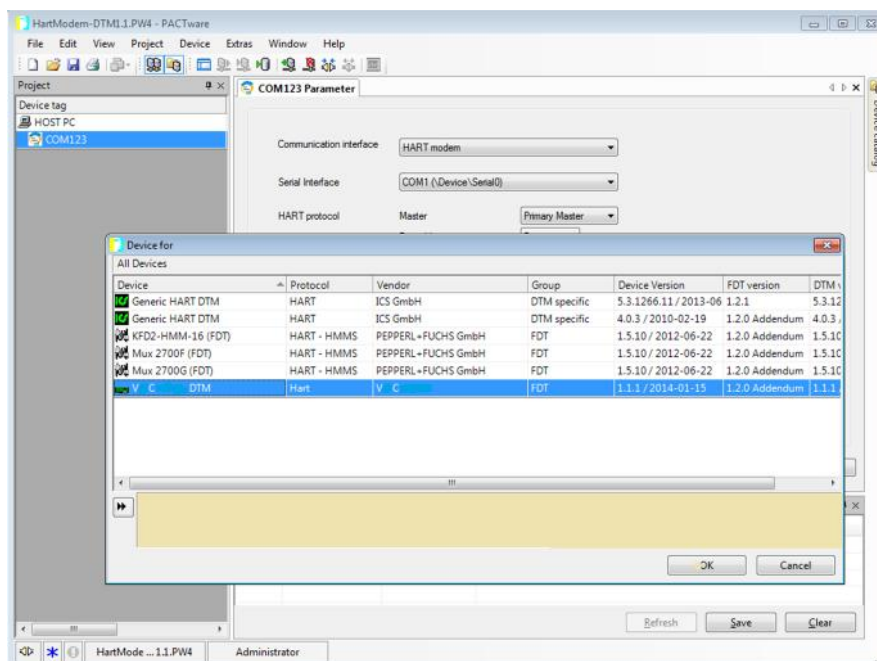
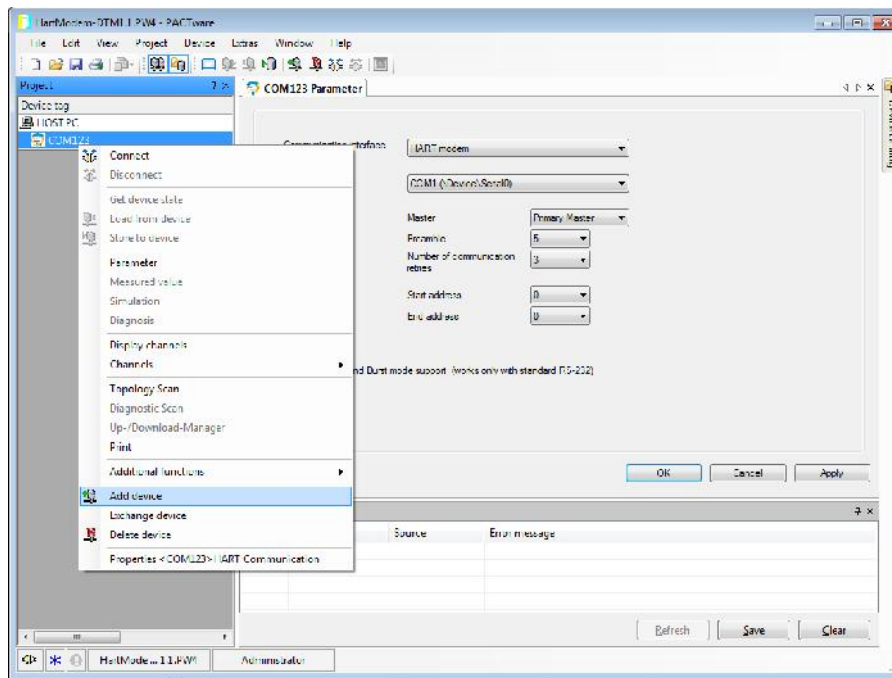
- 2) Press the “Update device catalog” button.



- Add the "HART Communication" DTM and choose the correct COM port
- 3) Remove checkmark in "Multi master and Burst mode support"



4) Add the V C DTM



5) Save the configuration as "V\_\_C\_\_.PW4".



---

#### **4 Start VCDC from PACTware**

Connect to the device and open the VC DTM.

Press "Start VCDC" to start Valve Control & Diagnostic Centre with a connection to selected device.



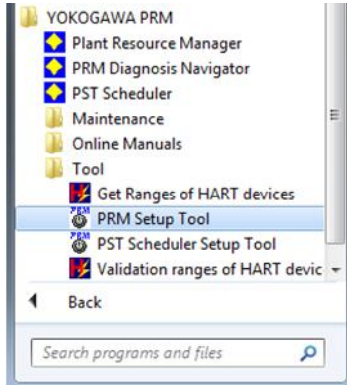


## 5 Yokogawa PRM

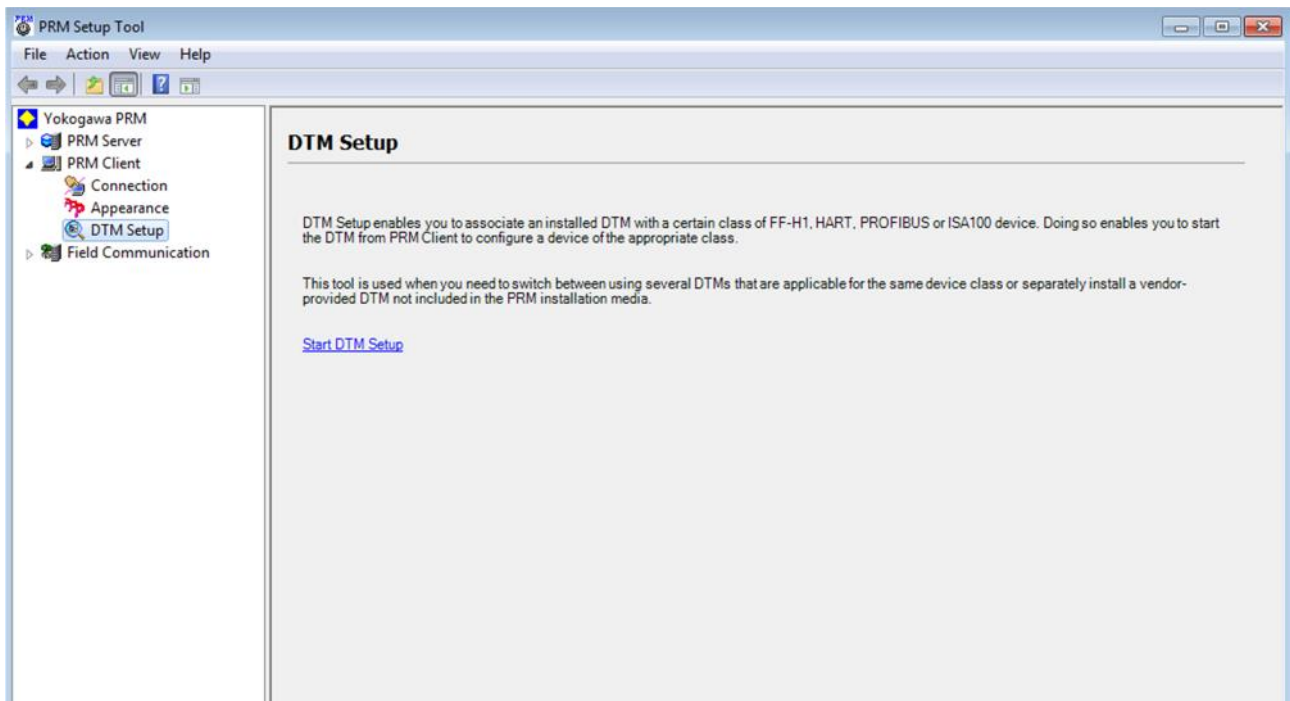
This guide is based on Yokogawa PRM R3.11.20.

Install the V C DTM as explained in section 2.4.

To import the DTM in Yokogawa PRM start “PRM Setup Tool”



Start the “DTM Setup” by clicking on the blue text “Start DTM Setup”.



Allow the DTM Setup to update the database.



The necessary Vendor ID and Model ID are not available in PRM and must be entered manually.

Vendor: 0x00602E

VSD (Basic Version): 0xE1F0

VSD (Diagnostic Version): 0xE2FA

Revision Status: Please Contact Imtex Valve Communication ( [sales@imtex-controls.com](mailto:sales@imtex-controls.com) )

DTM Name	DTM Revision	DTM Vendor	Vendor	Model	Device Re.
V C DTM	1.1.2	V C	0x00602E	0xE2FA	3
YEWFO V1.4	1.4.124.0	YOKOGAWA	YOKOGAWA	YEWFO	1
YEWFO V2.2	1.4.124.0	YOKOGAWA	YOKOGAWA	YEWFO	2
YT200 V1.1	1.4.124.0	YOKOGAWA	YOKOGAWA	YT200	1
UNICOM V1.1	1.4.124.0	YOKOGAWA	YOKOGAWA	UNICOM	1
EJA V1.2	1.4.155.14	YOKOGAWA	YOKOGAWA	EJA	1
EJA V2.1	1.4.124.16	YOKOGAWA	YOKOGAWA	EJA	2
EJA V3.1	1.4.160.0	YOKOGAWA	YOKOGAWA	EJA	3
ADMAG_AE V1.1	1.4.124.0	YOKOGAWA	YOKOGAWA	ADMAG_AE	1
ADMAG_AE V2.1	1.4.124.0	YOKOGAWA	YOKOGAWA	ADMAG_AE	2
AM11 V1.1	1.4.124.0	YOKOGAWA	YOKOGAWA	AM11	1
ADMAG_SE V1.1	1.4.124.0	YOKOGAWA	YOKOGAWA	ADMAG_SE	1
ADMAG_SE V2.1	1.4.124.0	YOKOGAWA	YOKOGAWA	ADMAG_SE	2
YTA V1.2	1.4.124.0	YOKOGAWA	YOKOGAWA	YTA	1
YTA V2.1	1.4.155.5	YOKOGAWA	YOKOGAWA	YTA	2
YTA V3.1	1.4.160.1	YOKOGAWA	YOKOGAWA	YTA	3
YTA70E V1.1	1.4.160.90	YOKOGAWA	YOKOGAWA	YTA70E	1
DYF V1.1	1.4.124.0	YOKOGAWA	YOKOGAWA	DYF	1
DYF V2.1	1.4.160.0	YOKOGAWA	YOKOGAWA	DYF	2
DYF V3.1	1.4.160.1	YOKOGAWA	YOKOGAWA	DYF	3
DYF V4.1	1.4.160.15	YOKOGAWA	YOKOGAWA	DYF	4
ZR202 V1.1	1.4.124.0	YOKOGAWA	YOKOGAWA	ZR202	1
ZR402 V1.1	1.4.160.1	YOKOGAWA	YOKOGAWA	ZR402	1
ISC202 V1.2	1.4.124.0	YOKOGAWA	YOKOGAWA	ISC202	1
PH202 V1.3	1.4.124.0	YOKOGAWA	YOKOGAWA	PH202	1