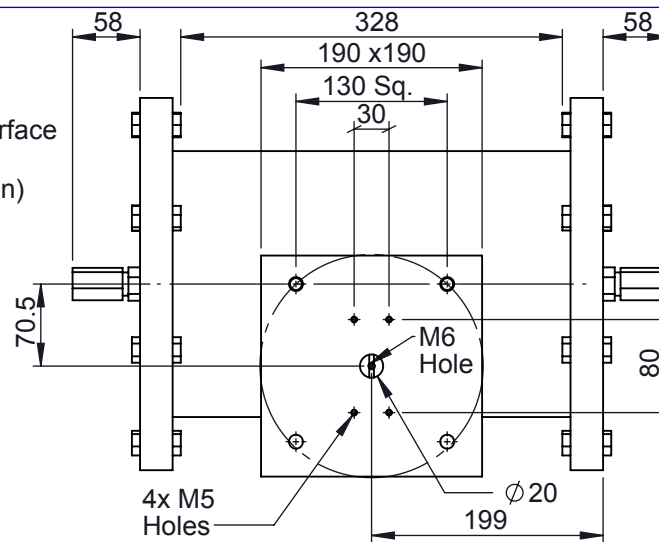
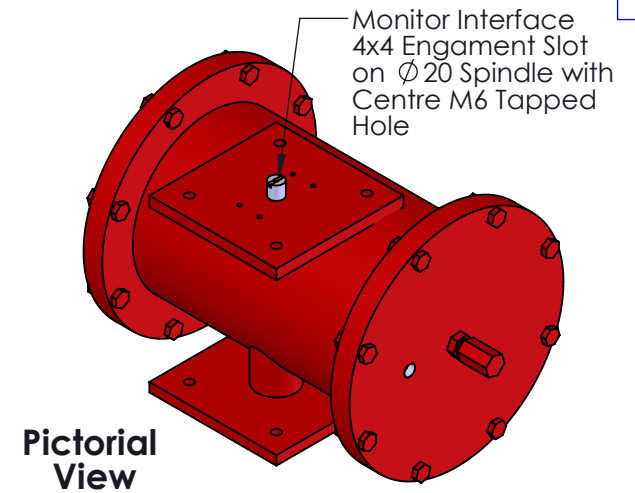


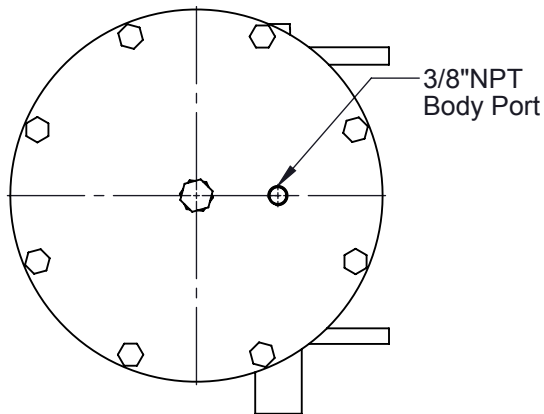
**Underside Flange**



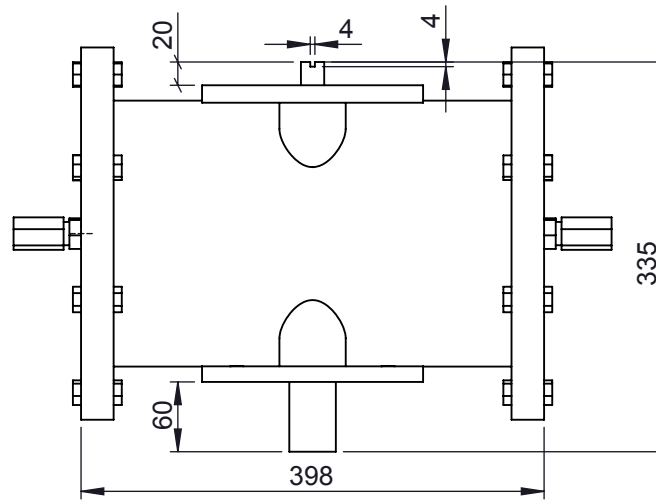
**Plan View**



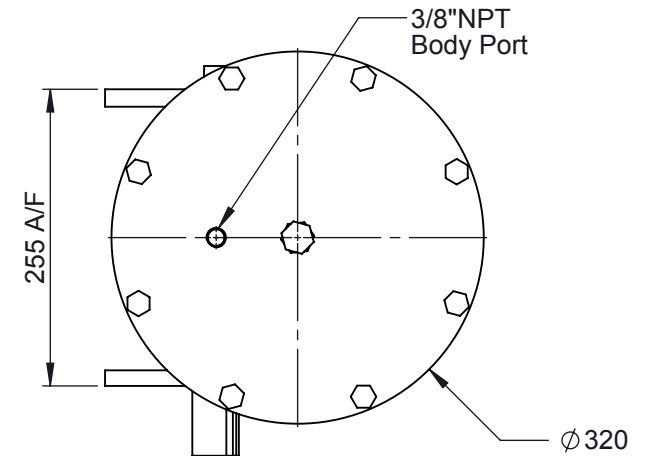
**Pictorial View**



**Left Elevation**



**Front Elevation**



**Right Elevation**

|                       |             |
|-----------------------|-------------|
| DA - Weight (kg)      | 68.0 kg     |
| DA - Swept Volume (l) | 4.49 litres |

| REV | DRAWN | DATE    | CHK'D | ECO     |
|-----|-------|---------|-------|---------|
|     | KY    | 14/1/14 |       | 14-2179 |
| A   |       |         |       |         |
| B   |       |         |       |         |
| C   |       |         |       |         |
| D   |       |         |       |         |
| E   |       |         |       |         |

Unless specified otherwise

Dimensions in : mm  
 Surface Finish : 3.2  
 Tolerances  
 Linear : ± 0.25mm  
 Angular : ± 0.5°

TITLE:

**S85 DA ACT. DIMENSIONS**

This private & confidential drawing is the property of Camtorc Actuators, UK and must not be copied or reproduced without the express written permission of the Company.



**CAMTORC Actuators**  
 UK Tel : +44(0) 8700 340002  
 www.camtorc.com

For reference and information only

MATERIAL: Carbon Steel

ESTIMATED WEIGHT (Kg):

DRG No:

**S85DA-DIM004**

ACTIVE

STATUS

SCALE :-

SHEET 1 OF 1

A4